

# FX CRUISER SVHO



## PRICE



## FX MODEL VARIATIONS



### FX HO

- 1.9L Naturally Aspirated High Output Engine
- Sports 2-Piece Seat

### FX CR HO

- 1.9L Naturally Aspirated High Output Engine
- Theatre Style Seat

### FX SVHO

- 1.8L Supercharged Marine Engine
- Sports 2-Piece Seat

### FX CR SVHO

- 1.8L Supercharged Marine Engine
- Theatre Style Seat

### FX LTD SVHO

- 1.8L Supercharged Marine Engine
- Theatre Style Seat
- 2 Pull-Up Cleats

## HULL & DECK

- Sheet Moulded Compound (SMC) Hull & Deck
- 3-Person, Theatre Style, 2-Piece Seat
- Fully Integrated Yamaha Bluetooth Speaker System
- Footwell Drains
- L3.58m x W1.27m x H1.20m
- Weight 397kg
- Reboarding Step and Handle
- Tilt Adjustable Steering with Tie Hooks
- Tow Hook and Dual Mirrors
- Multi-Mount System for Phone, Action Camera, GPS, Fish Finder or Speakers

## ENGINE & DRIVE TRAIN

- 1812CC Supercharged 4-cylinder, 4-stroke, Super Vortex High Output Yamaha Marine Engine
- 160mm 8-Vane High-Pressure Jet Pump
- Top Loader Intake Grate
- Electronic Fuel Injection
- 70 Litre Fuel Capacity

## STORAGE

- Total Capacity - 167 Litres
- Front Hood - 130 Litres
- Glove Box - Watertight, LED Light, USB and 12 Volt Ports - 16.5 Litres
- Under Seat - Watertight - 9 Litres
- Wet Stern Storage - 11.5 Litres

## COCKPIT & DASH

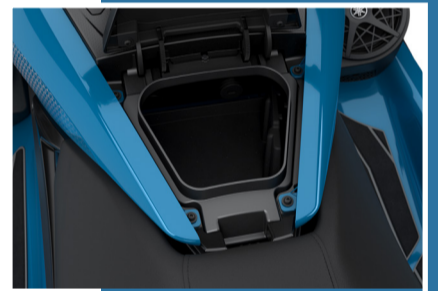
- 7-inch Infotainment System with GPS and Smartphone Integration
- Reverse with Intuitive Deceleration Electronics (RiDE™)
- Electric Trim/Cruise Assist/No Wake Mode™
- Advanced Reverse Assist
- Customisable Speed, Drive and Acceleration Modes



1.8L SUPERCHARGED



YAMAHA SPEAKERS



MASSIVE STORAGE



COCKPIT



THEATRE STYLE SEAT

SCAN ME

